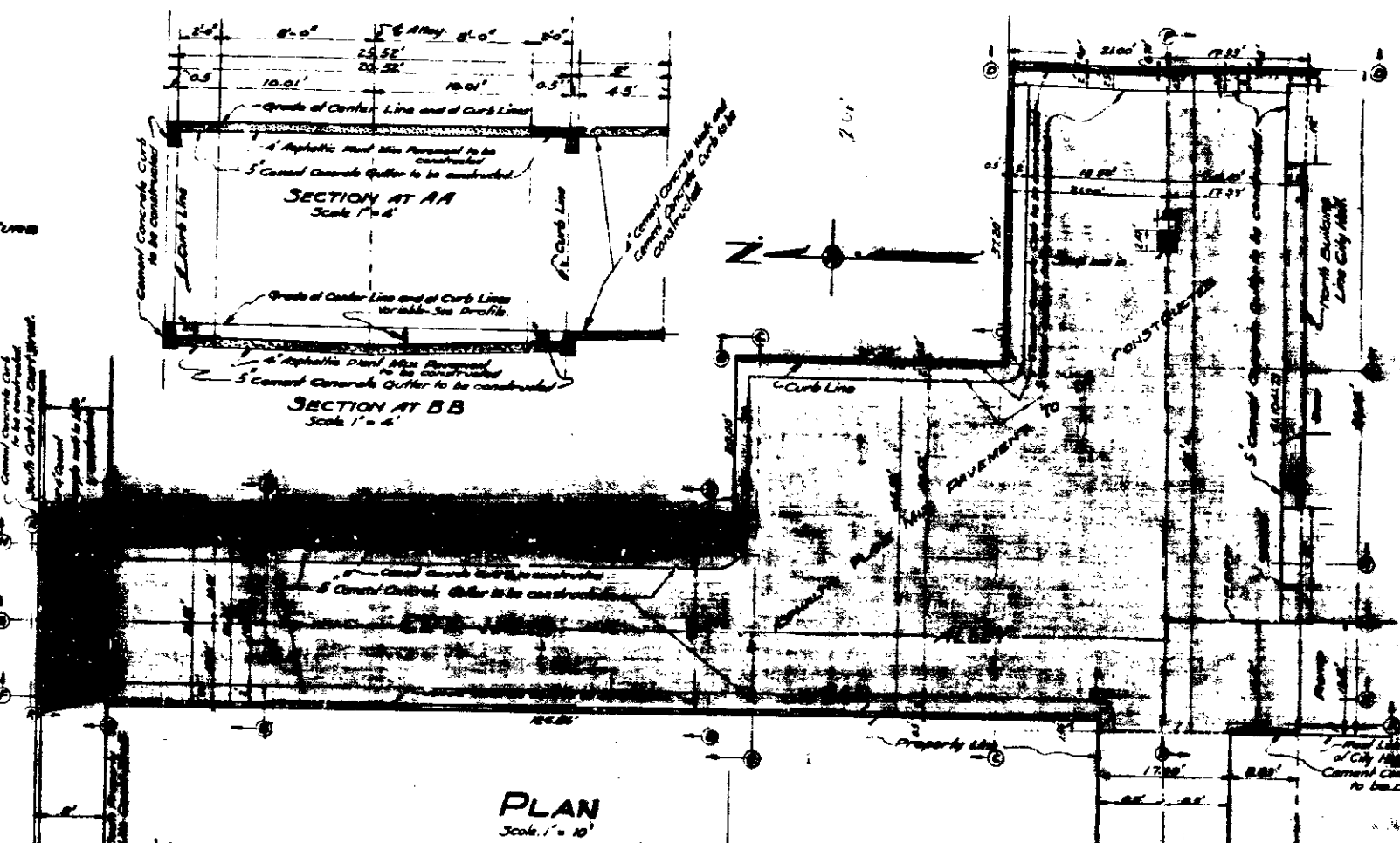
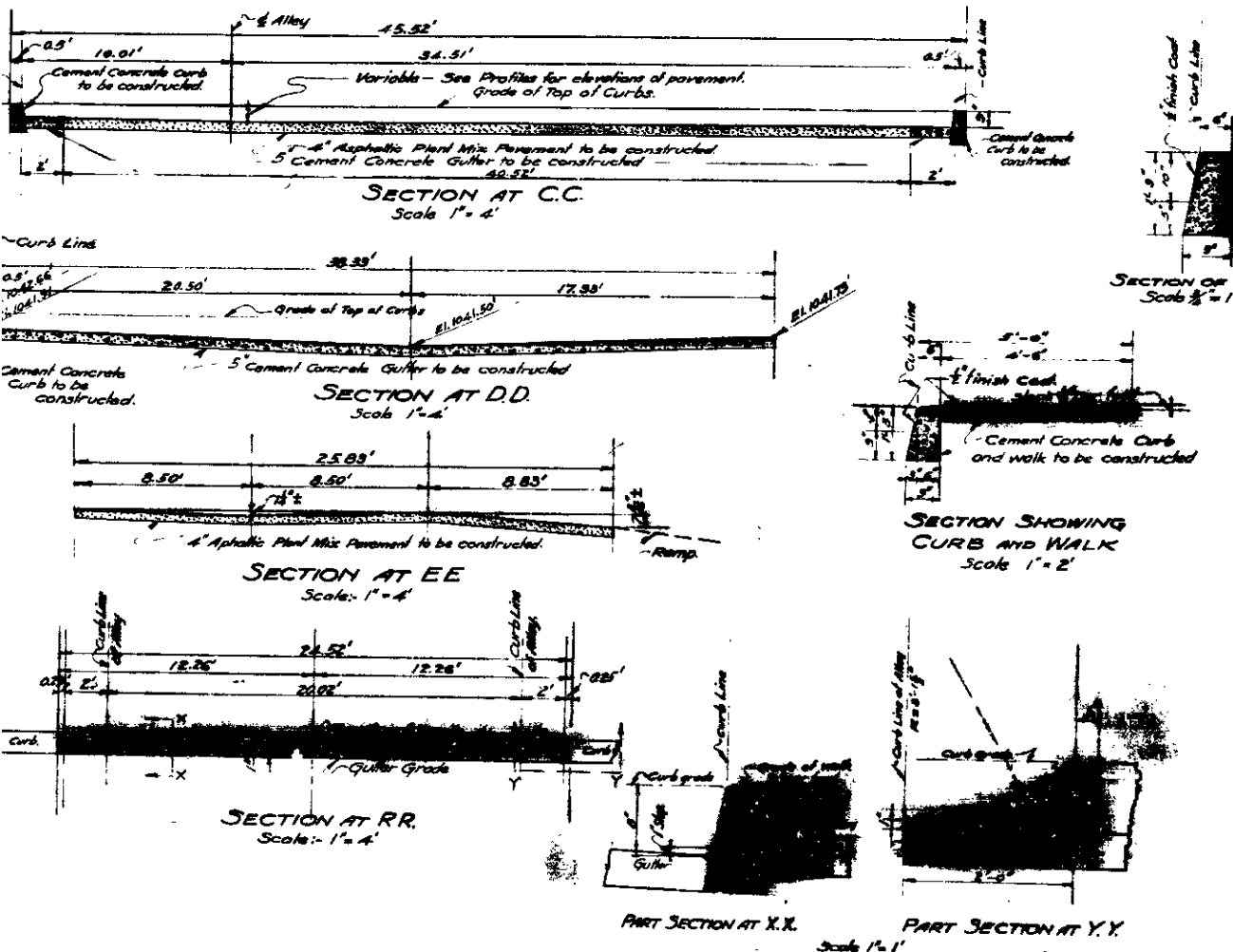
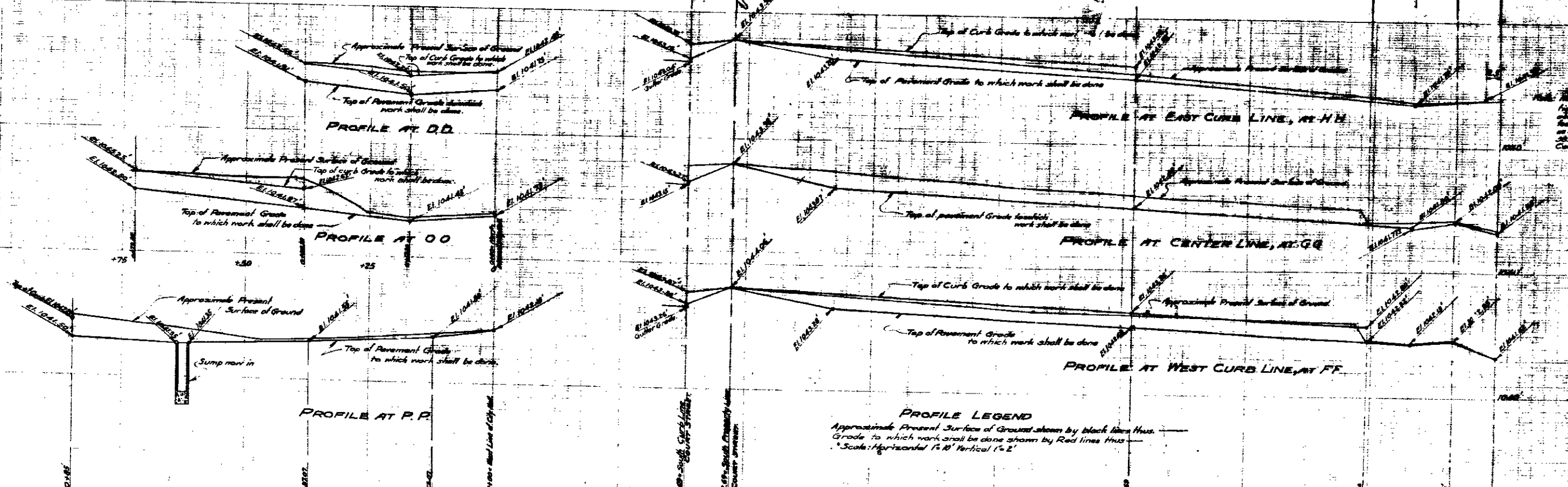


PLAN
FOR THE IMPROVEMENT OF
CITY HIGHWAY
CITY OF SAN FRANCISCO
CALIFORNIA
December 1937
Scale as shown.



Note: Driveways to be constructed thru curbs at locations specified by the City Engineer.



Note: The existing curbs at the corners are to be replaced with curb and gutter as shown on the City Engineer's plan as established by Ordinance 288 of the City of San Francisco.

- LEGEND**
- 1" or 1 1/2" concrete curb and gutter
 - 4" asphaltic plant mix
 - 5" cement concrete gutter
 - 5" cement concrete gutter to be constructed
 - 4" cement concrete curb to be constructed
 - 5" cement concrete gutter to be constructed